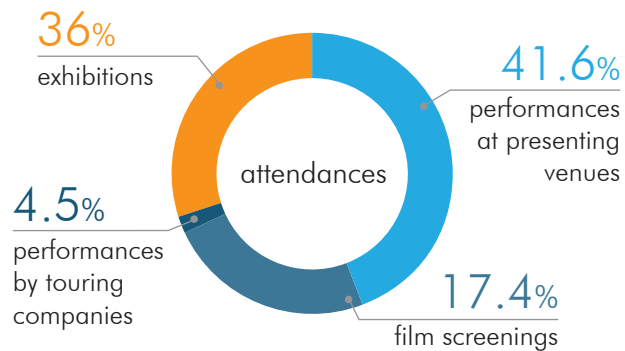


Venues

Arts Portfolio Wales Survey 2017/18

Events

12,395 events | 1,821,458 attendances



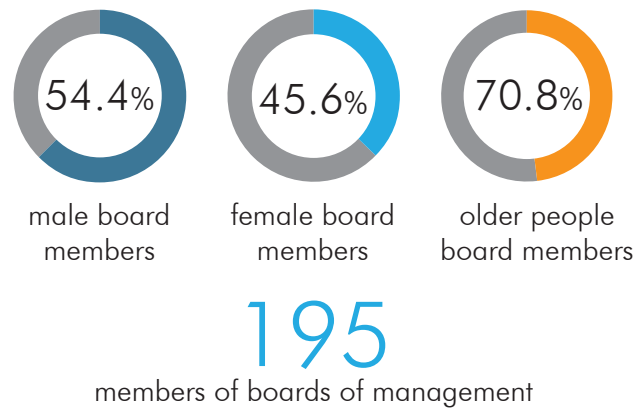
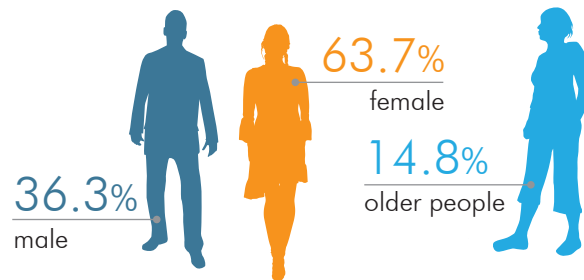
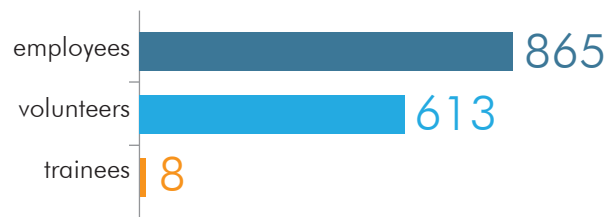
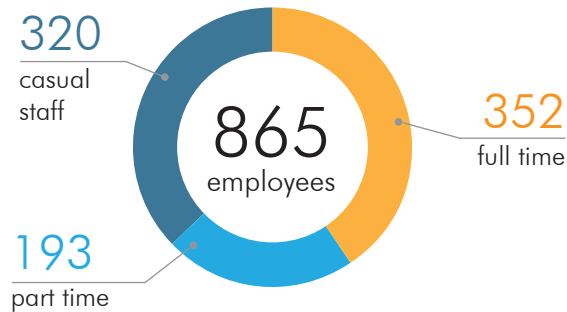
Participation

12,419 participatory sessions

216,698 attendances

9,618 (77.4%) participatory sessions were specifically targeted at children and young people, compared to 22.6% of sessions that were organised for general participation

Employment and training



Welsh language*

256 Welsh language events

Welsh language events attracted 37,387 attendances

436 Welsh language participatory sessions, which is 3.5% of all participatory sessions

Welsh language sessions attracted 13,651 attendances

34.4% of board members were Welsh speakers



22.6% Welsh speaking employees

85.6% of Welsh language sessions were targeted at children and young people

*This data does not include bilingual activity

Families

3.6% of participatory sessions were targeted at families. These attracted

18,227 attendances

Aberystwyth Arts Centre

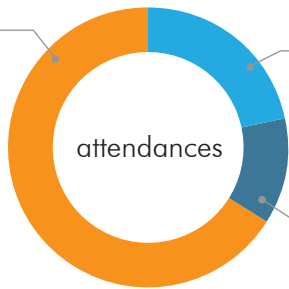
Arts Portfolio Wales Survey 2017/18

Events

1,171
events

257,472
attendances

66%
exhibitions



21.7%
performances
at presenting
venues

12.4%
film screenings

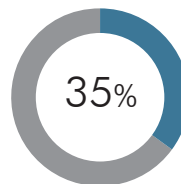
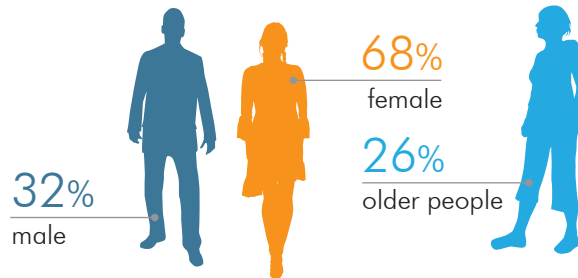
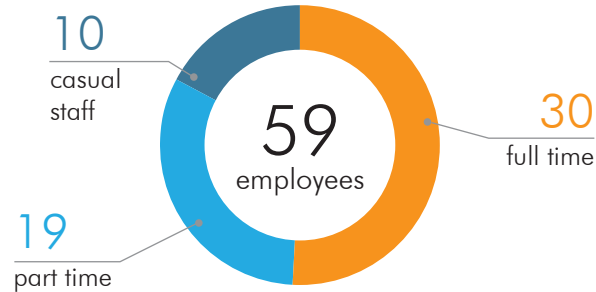
Participation

6,065
participatory
sessions

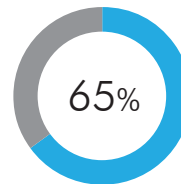
67,008
attendances

5,339
(88%) participatory
sessions were specifically
targeted at children and
young people, compared
to 12% of sessions that
were organised for
general participation

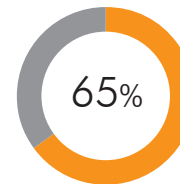
Employment and training



male board
members



female board
members



older people
board members

17

members of boards of management

Welsh language*

15
Welsh language
events

Welsh language
events attracted
3,711
attendances

71%
of board members
were Welsh speakers

50%
Welsh speaking
employees

*This data does not include bilingual activity

4
Welsh language
participatory sessions,
which is 0% of
all participatory
sessions

Welsh language
sessions attracted
72
attendances



75%
of Welsh language
sessions were targeted
at children and
young people

Families

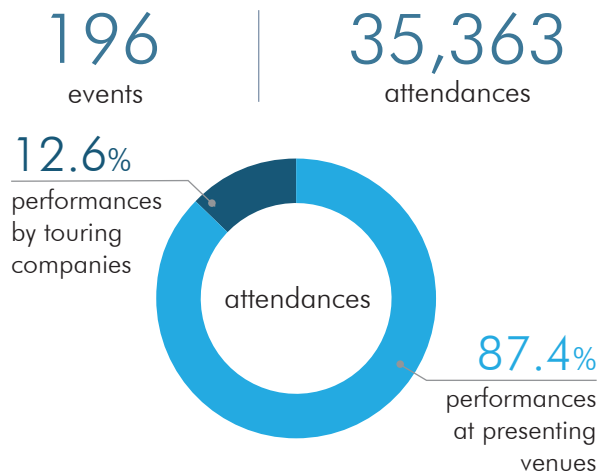
3%
of participatory sessions were
targeted at families. These attracted

2,563
attendances

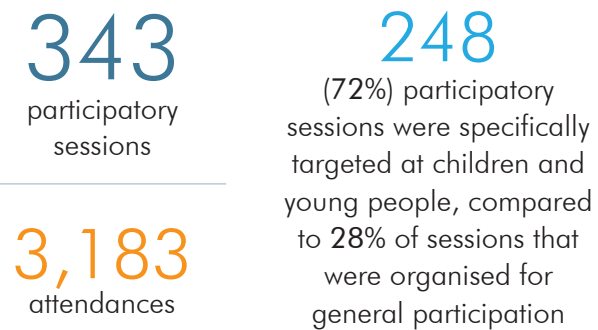
Blackwood Miners Institute

Arts Portfolio Wales Survey 2017/18

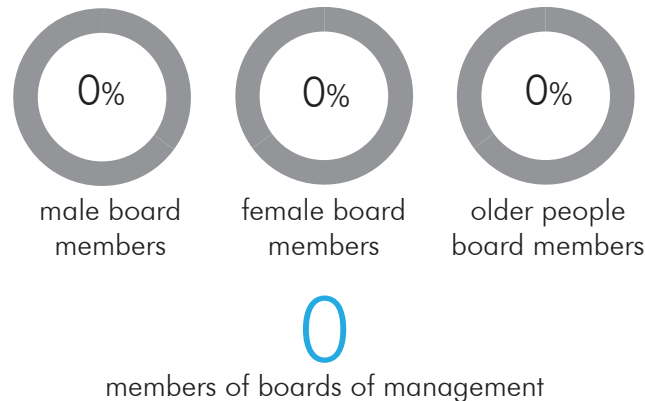
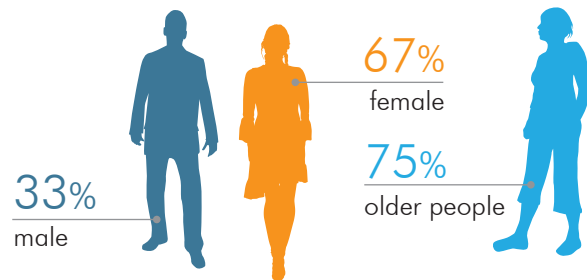
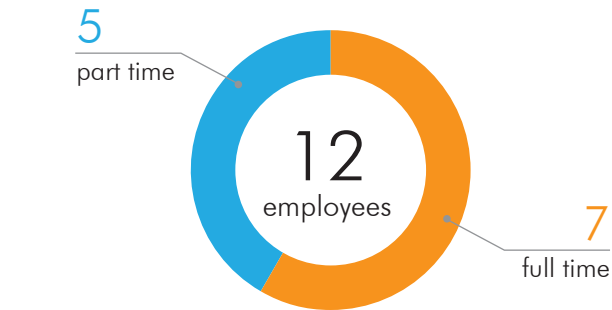
Events



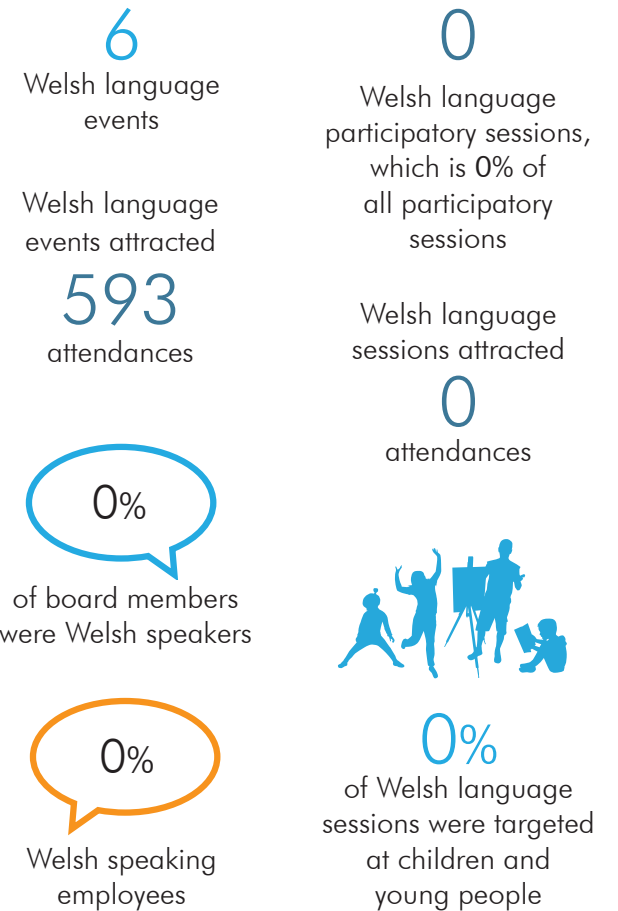
Participation



Employment and training

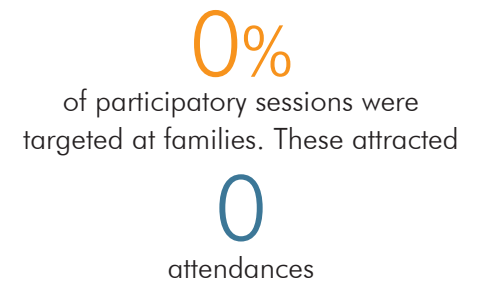


Welsh language*



*This data does not include bilingual activity

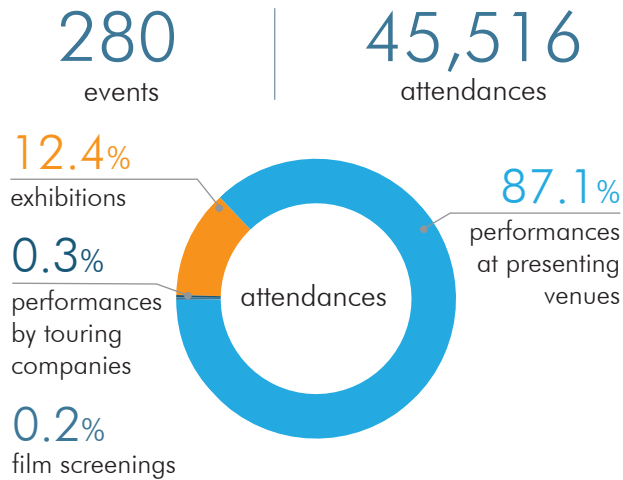
Families



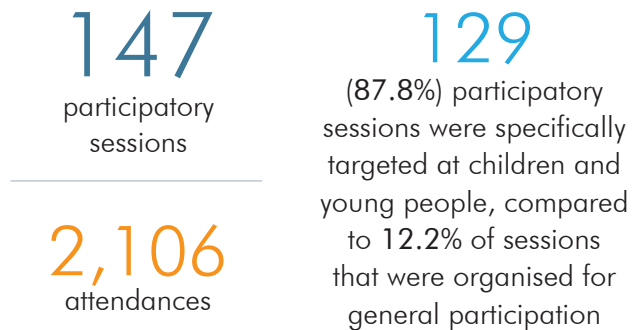
Theatr Brycheiniog

Arts Portfolio Wales Survey 2017/18

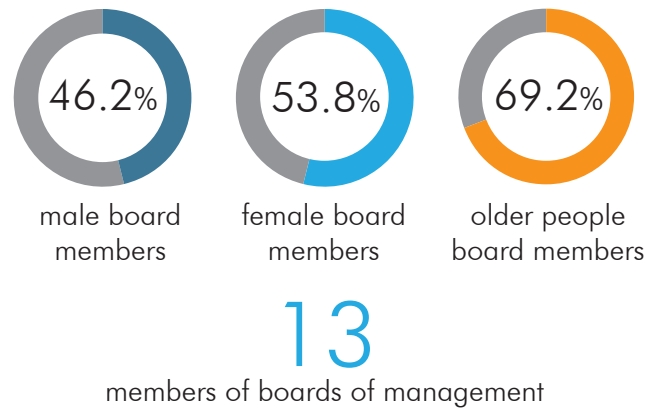
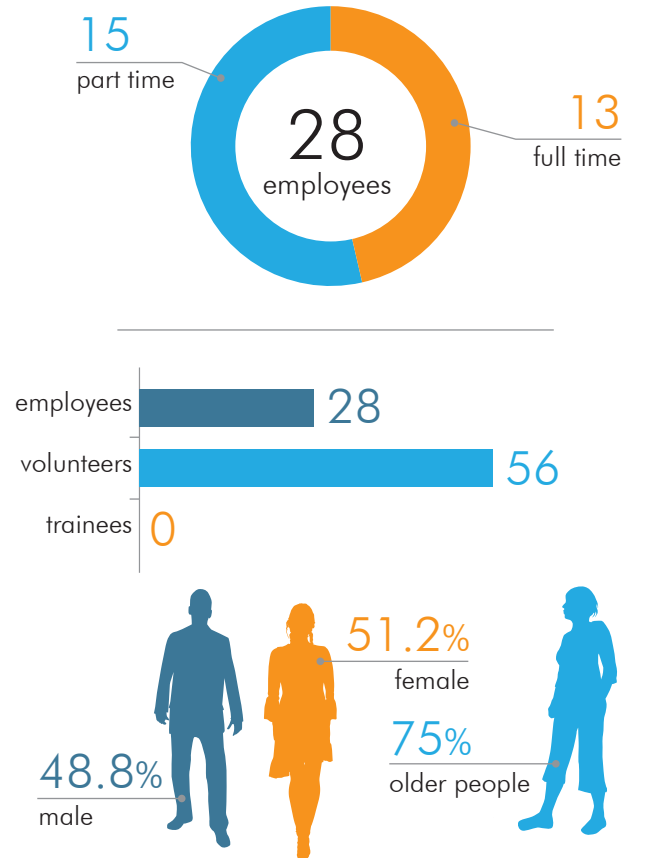
Events



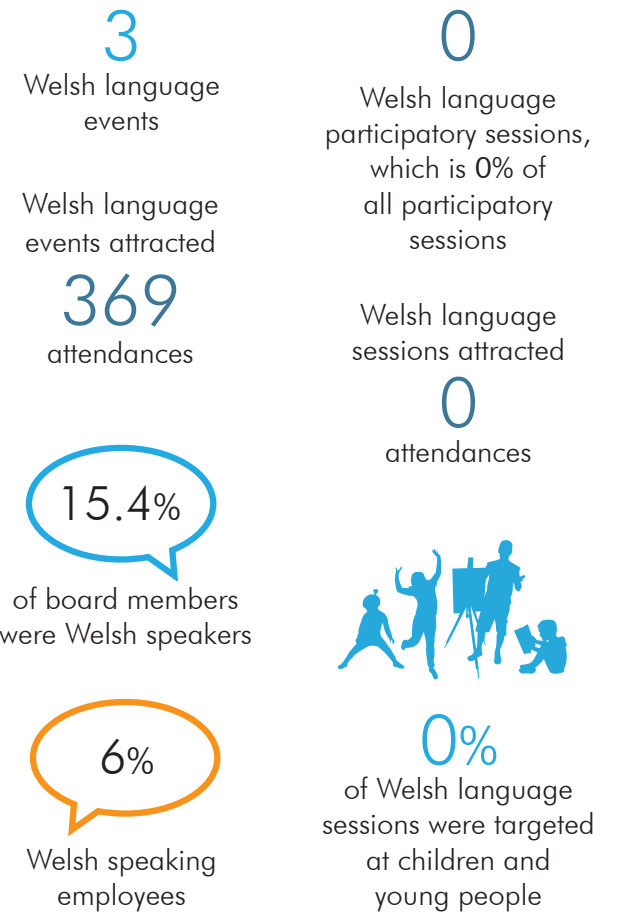
Participation



Employment and training

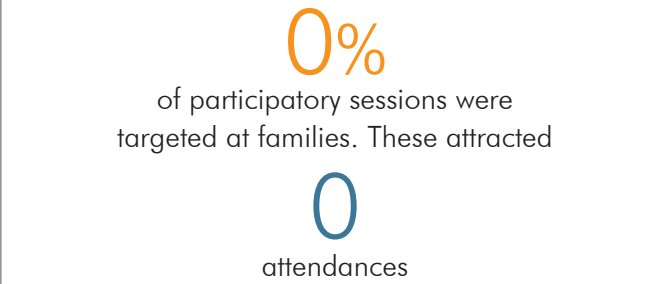


Welsh language*



*This data does not include bilingual activity

Families



Chapter

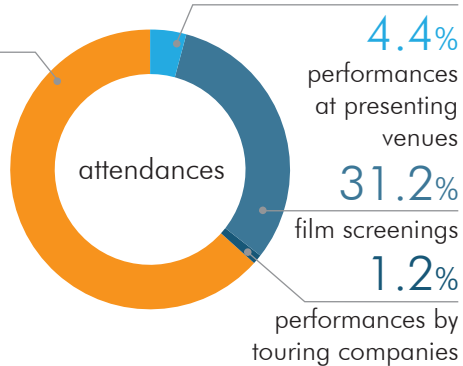
Arts Portfolio Wales Survey 2017/18

Events

3,416
events

362,494
attendances

63%
exhibitions



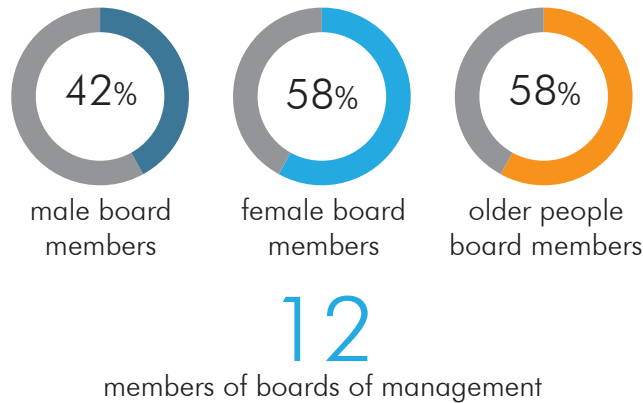
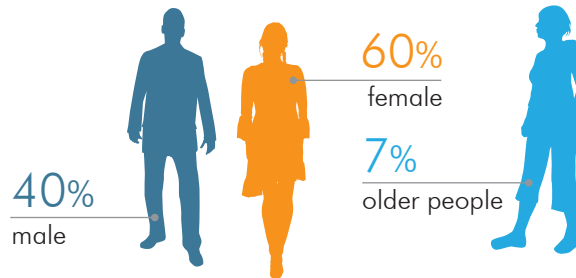
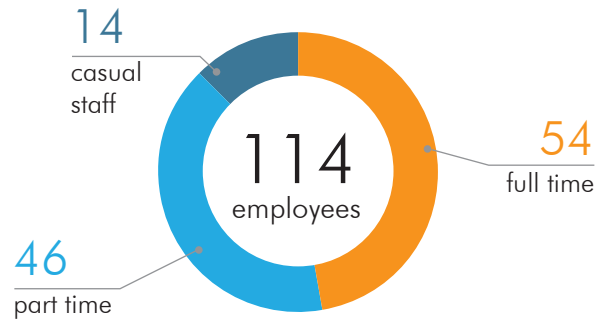
Participation

410
participatory
sessions

22,945
attendances

289
(70%) participatory
sessions were specifically
targeted at children and
young people, compared
to 30% of sessions that
were organised for
general participation

Employment and training



Welsh language*

29
Welsh language
events

Welsh language
events attracted
1,583
attendances

25%
of board members
were Welsh speakers

9%
Welsh speaking
employees

*This data does not include bilingual activity

6
Welsh language
participatory sessions,
which is 1% of
all participatory
sessions

Welsh language
sessions attracted
48
attendances



0%
of Welsh language
sessions were targeted
at children and
young people

Families

2%
of participatory sessions were
targeted at families. These attracted

160
attendances

Galeri

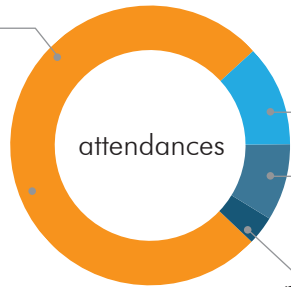
Arts Portfolio Wales Survey 2017/18

Events

470
events

144,089
attendances

76%
exhibitions



11.9%
performances at presenting venues

8.8%
film screenings

3.4%
performances by touring companies

Participation

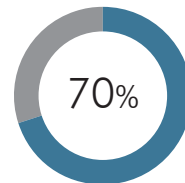
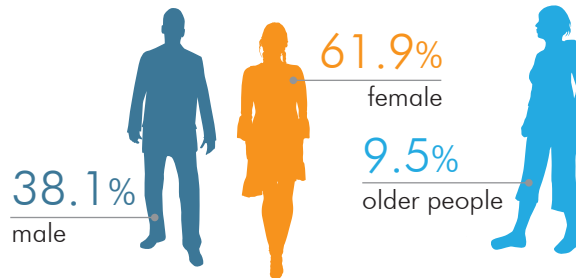
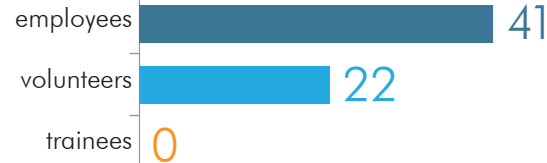
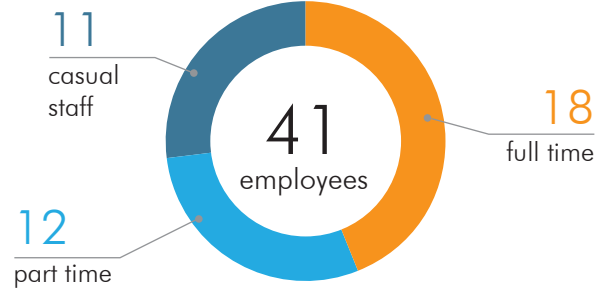
726
participatory sessions

9,025
attendances

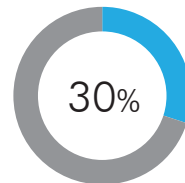
648

(89.3%) participatory sessions were specifically targeted at children and young people, compared to 10.7% of sessions that were organised for general participation

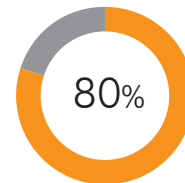
Employment and training



male board members



female board members



older people board members

10

members of boards of management

Welsh language*

107

Welsh language events

Welsh language events attracted

14,006
attendances



of board members were Welsh speakers



Welsh speaking employees

175

Welsh language participatory sessions, which is 24.1% of all participatory sessions

Welsh language sessions attracted

5,965
attendances



72.6% of Welsh language sessions were targeted at children and young people

*This data does not include bilingual activity

Families

1.8%

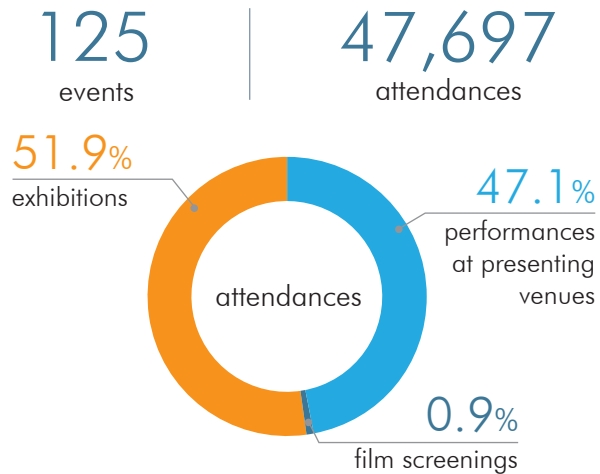
of participatory sessions were targeted at families. These attracted

214
attendances

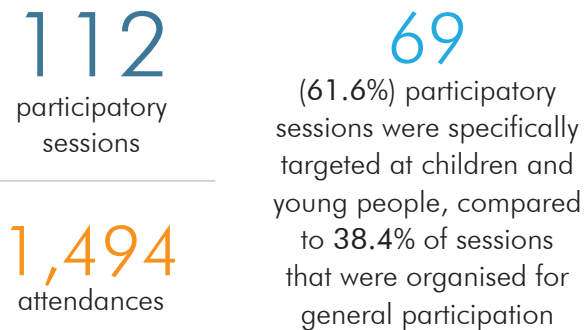
Hafren

Arts Portfolio Wales Survey 2017/18

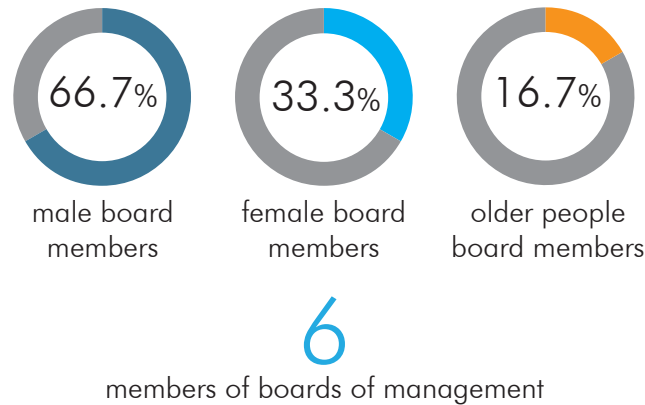
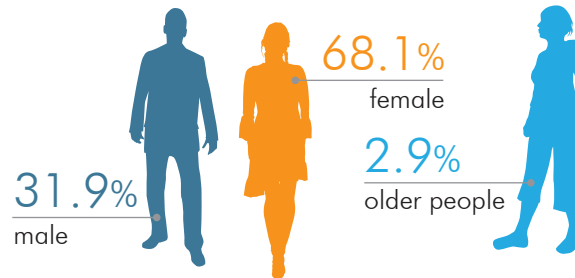
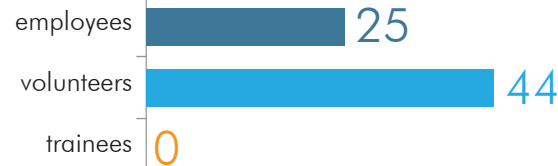
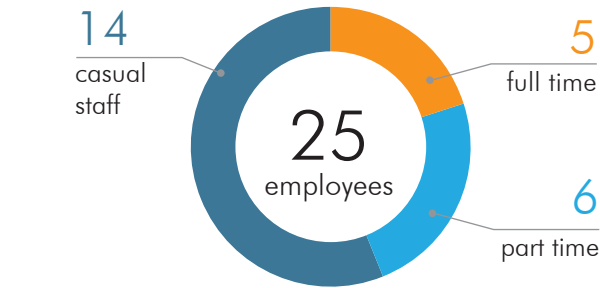
Events



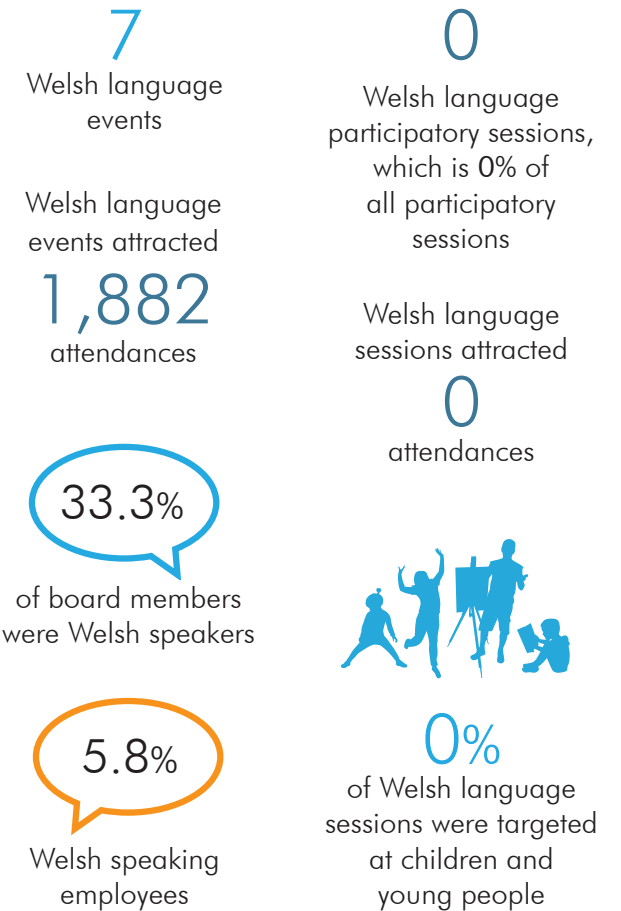
Participation



Employment and training

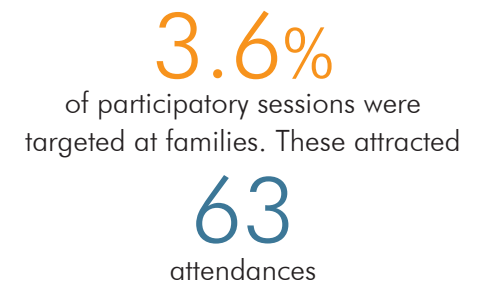


Welsh language*



*This data does not include bilingual activity

Families



Theatr Mwldan

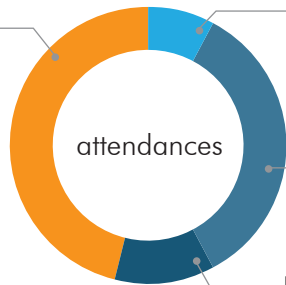
Arts Portfolio Wales Survey 2017/18

Events

2,967
events

184,930
attendances

45.9%
exhibitions



8%
performances at presenting venues

34.3%
film screenings

11.8%
performances by touring companies

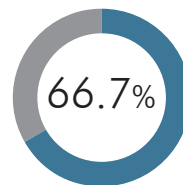
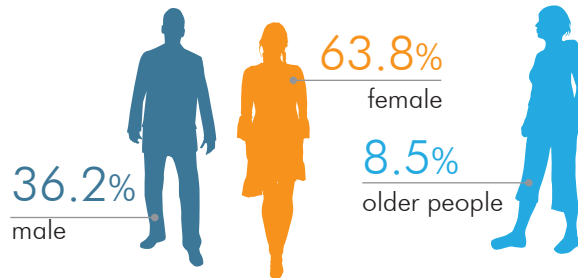
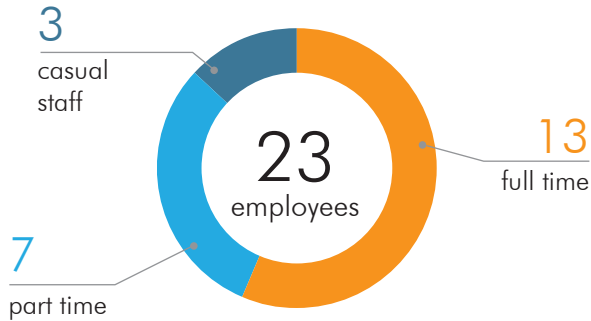
Participation

201
participatory sessions

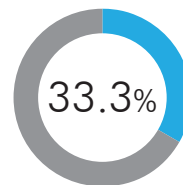
2,650
attendances

176
(87.6%) participatory sessions were specifically targeted at children and young people, compared to 12.4% of sessions that were organised for general participation

Employment and training



male board members



female board members



older people board members

9

members of boards of management

Welsh language*

18
Welsh language events

Welsh language events attracted
2,801 attendances

33.3%
of board members were Welsh speakers

31.9%
Welsh speaking employees

*This data does not include bilingual activity

2
Welsh language participatory sessions, which is 1.0% of all participatory sessions

Welsh language sessions attracted
51 attendances



50%
of Welsh language sessions were targeted at children and young people

Families

0%
of participatory sessions were targeted at families. These attracted

0
attendances

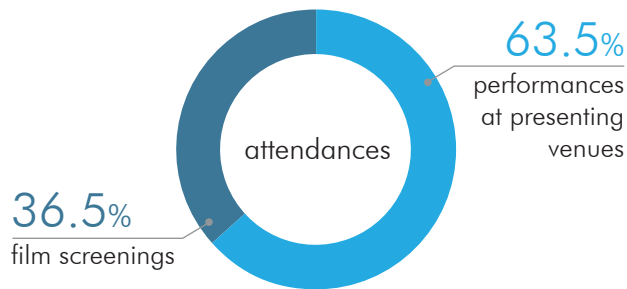
Pontardawe Arts Centre

Arts Portfolio Wales Survey 2017/18

Events

432
events

25,675
attendances



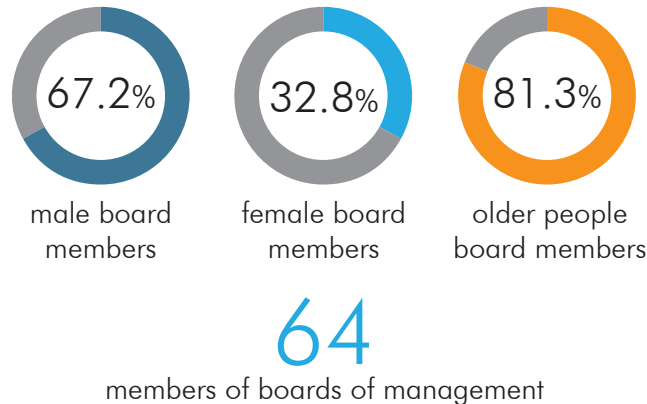
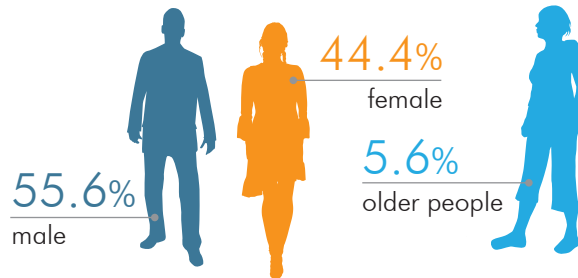
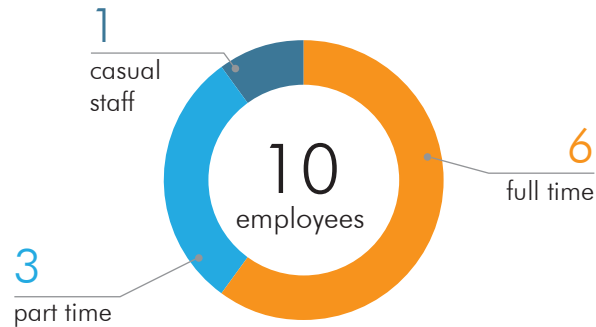
Participation

710
participatory
sessions

21,117
attendances

274
(38.6%) participatory
sessions were specifically
targeted at children and
young people, compared
to 61.4% of sessions
that were organised for
general participation

Employment and training



Welsh language*

2
Welsh language
events

Welsh language
events attracted
49
attendances

0%
of board members
were Welsh speakers

27.8%
Welsh speaking
employees

*This data does not include bilingual activity

6
Welsh language
participatory sessions,
which is 0.8% of
all participatory
sessions

Welsh language
sessions attracted
360
attendances



100%
of Welsh language
sessions were targeted
at children and
young people

Families

0%
of participatory sessions were
targeted at families. These attracted

0
attendances

Pontio

Arts Portfolio Wales Survey 2017/18

Events

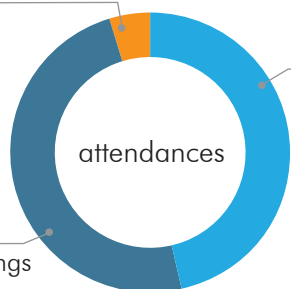
1,064
events

66,832
attendances

4.5%
exhibitions

46.6%
performances
at presenting
venues

48.9%
film screenings



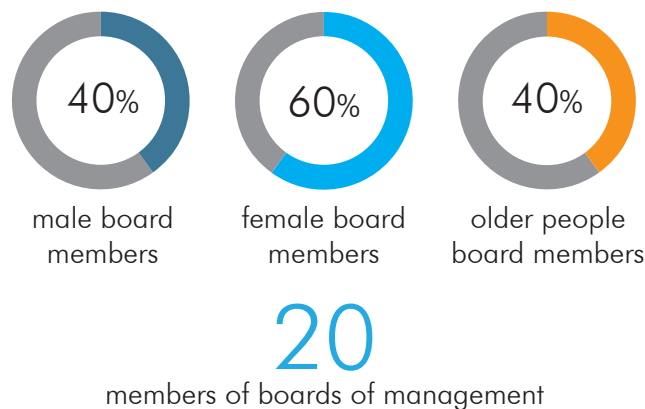
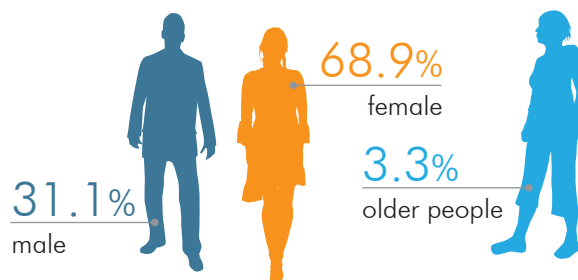
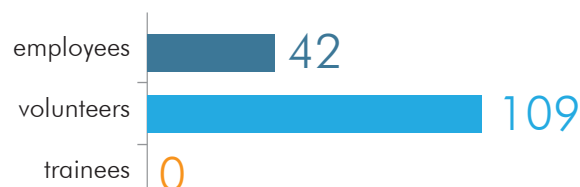
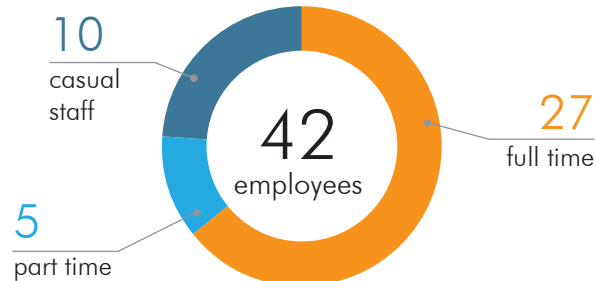
Participation

286
participatory
sessions

7,378
attendances

269
(94.1%) participatory
sessions were specifically
targeted at children and
young people, compared
to 5.9% of sessions
that were organised for
general participation

Employment and training



Welsh language*

54

Welsh language
events

Welsh language
events attracted
10,698
attendances

90%

of board members
were Welsh speakers

54.3%

Welsh speaking
employees

224

Welsh language
participatory sessions,
which is 78.3% of
all participatory
sessions

Welsh language
sessions attracted
5,243
attendances



99.1%
of Welsh language
sessions were targeted
at children and
young people

*This data does not include bilingual activity

Families

3.5%

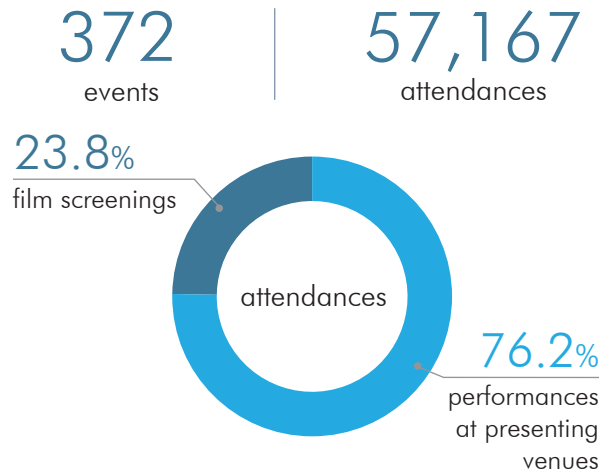
of participatory sessions were
targeted at families. These attracted

415
attendances

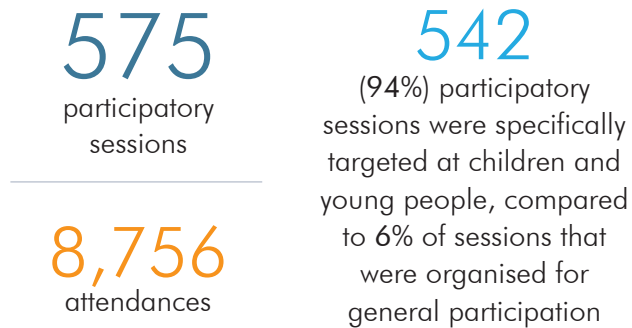
Rhondda Cynon Taf Theatres

Arts Portfolio Wales Survey 2017/18

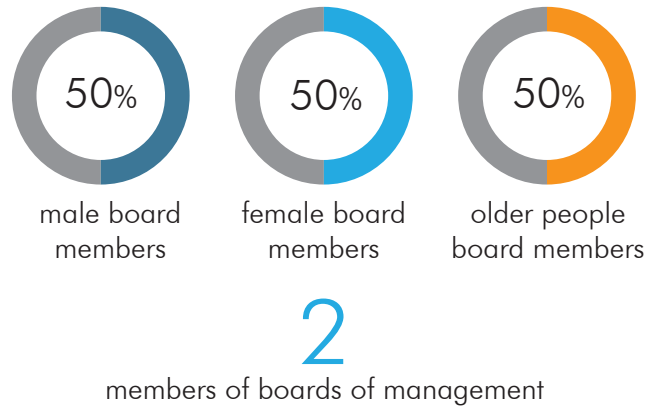
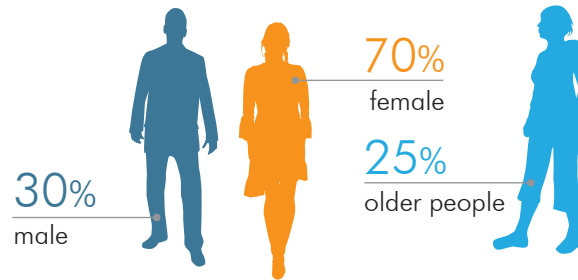
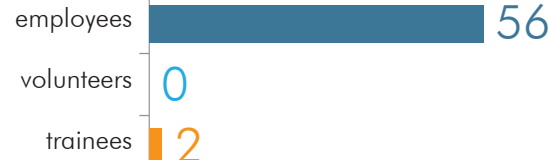
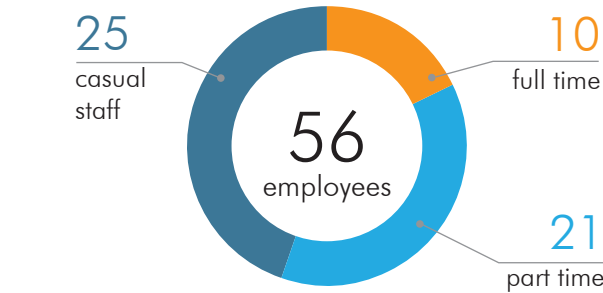
Events



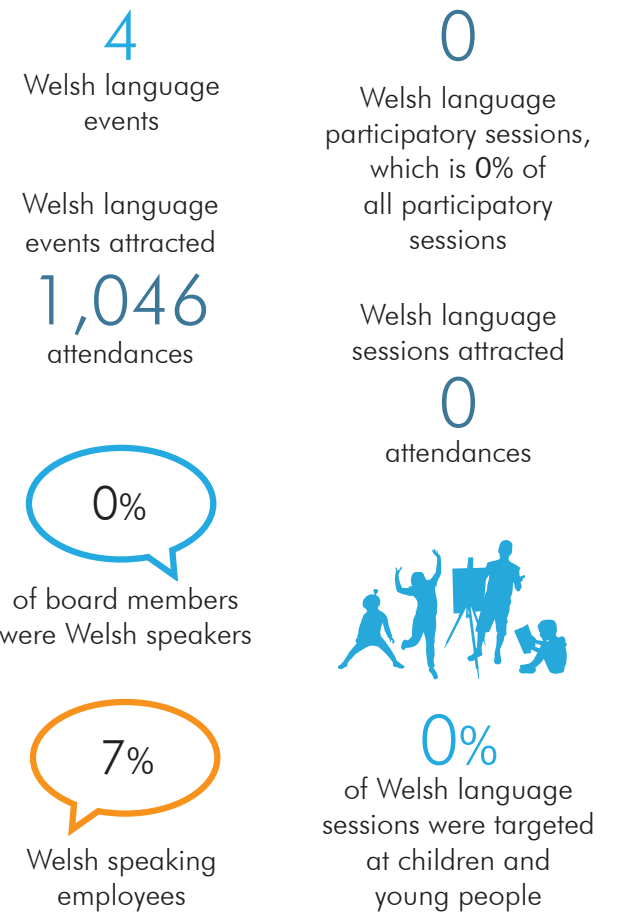
Participation



Employment and training

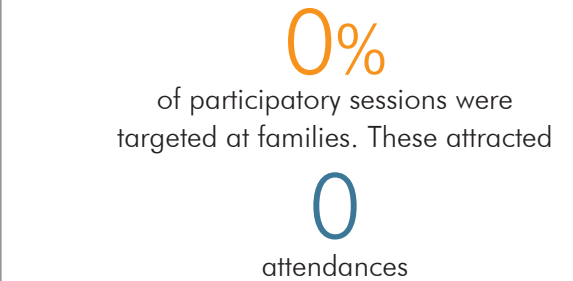


Welsh language*



*This data does not include bilingual activity

Families



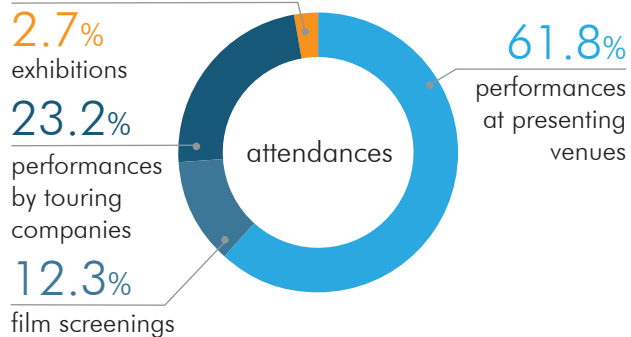
The Riverfront

Arts Portfolio Wales Survey 2017/18

Events

628
events

98,791
attendances



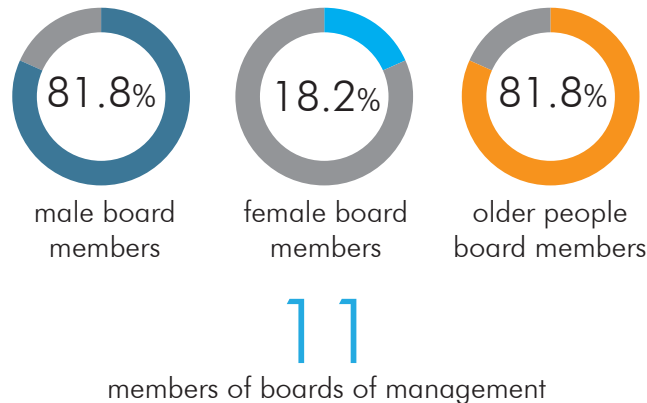
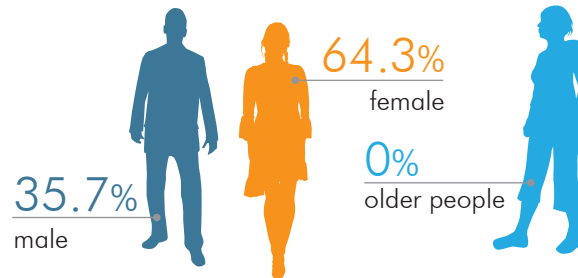
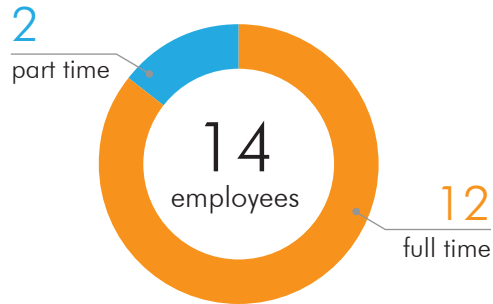
Participation

836
participatory
sessions

611
(73.1%) participatory
sessions were specifically
targeted at children and
young people, compared
to 26.9% of sessions
that were organised for
general participation

16,804
attendances

Employment and training



Welsh language*

1
Welsh language
events

Welsh language
events attracted
32
attendances

9.1%
of board members
were Welsh speakers

21.4%
Welsh speaking
employees

*This data does not include bilingual activity

0
Welsh language
participatory sessions,
which is 0% of
all participatory
sessions

Welsh language
sessions attracted
0
attendances



0%
of Welsh language
sessions were targeted
at children and
young people

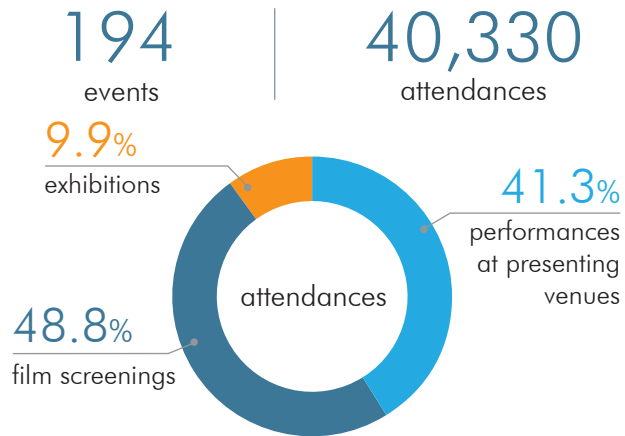
Families

0.7%
of participatory sessions were
targeted at families. These attracted
240
attendances

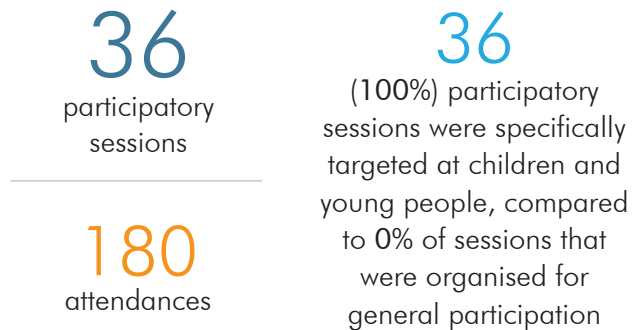
Taliesin Arts Centre

Arts Portfolio Wales Survey 2017/18

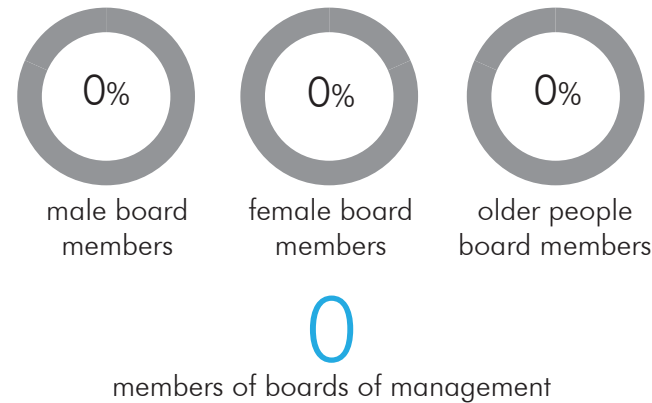
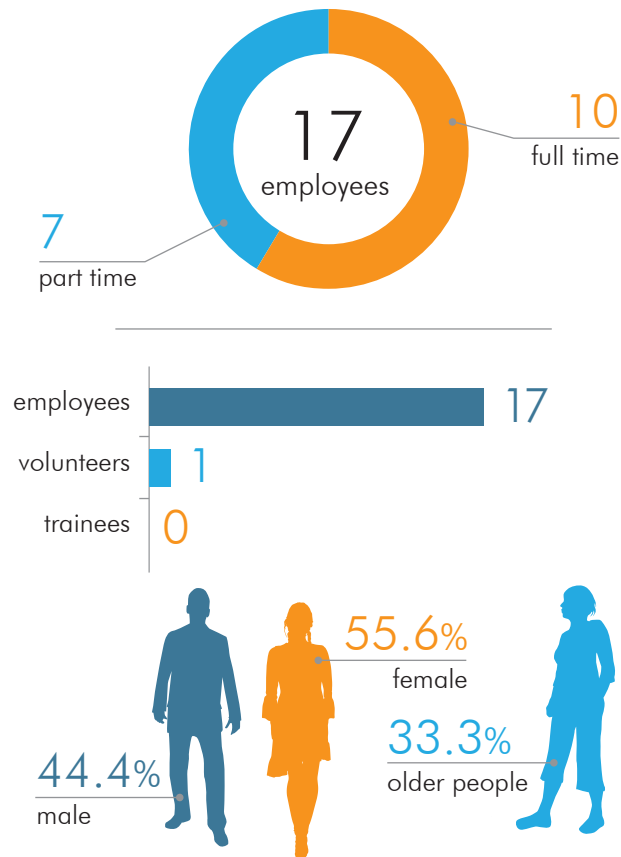
Events



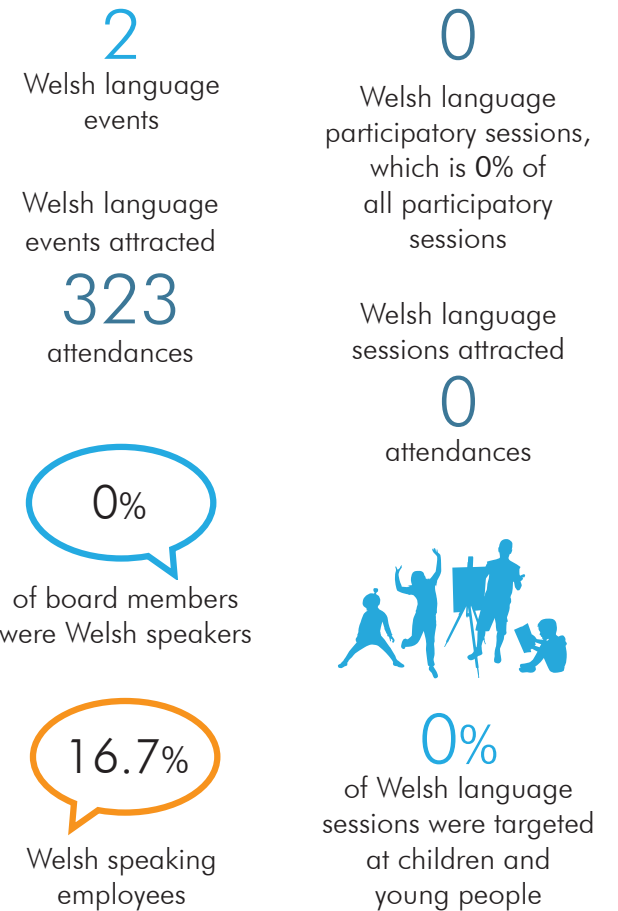
Participation



Employment and training

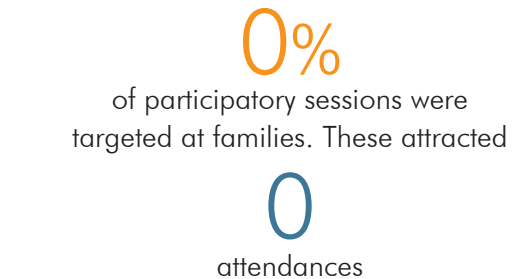


Welsh language*



*This data does not include bilingual activity

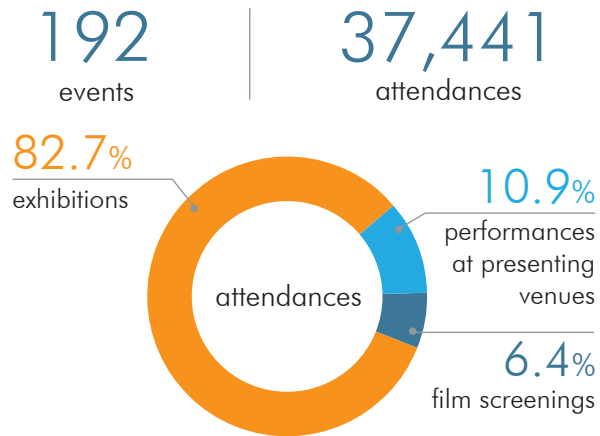
Families



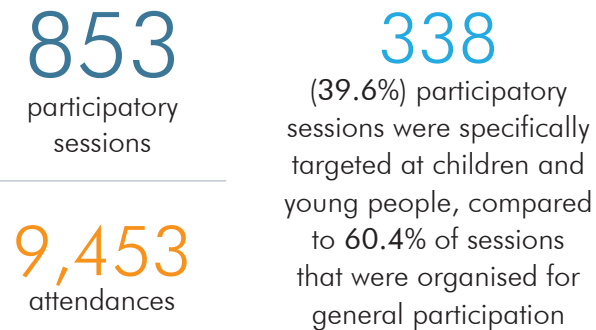
Ucheldre Centre

Arts Portfolio Wales Survey 2017/18

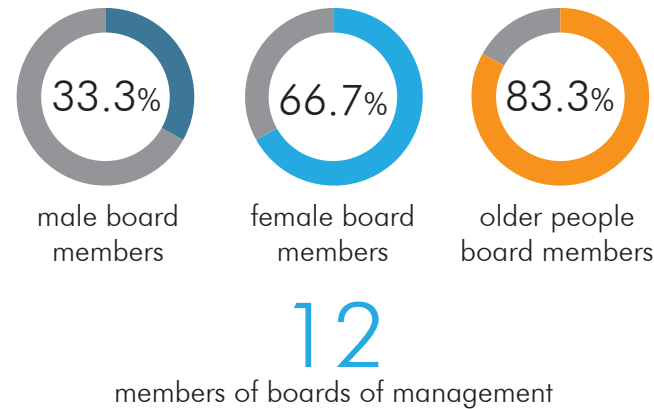
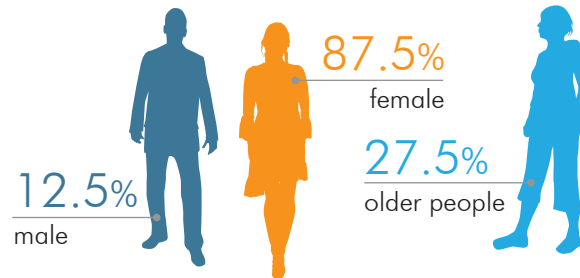
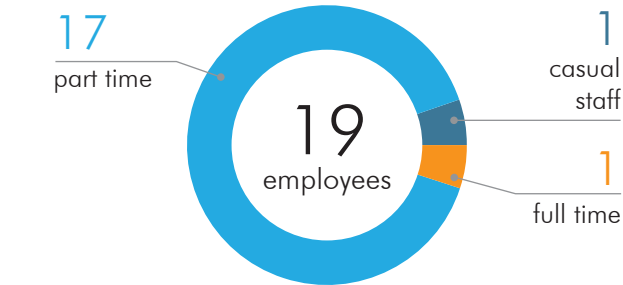
Events



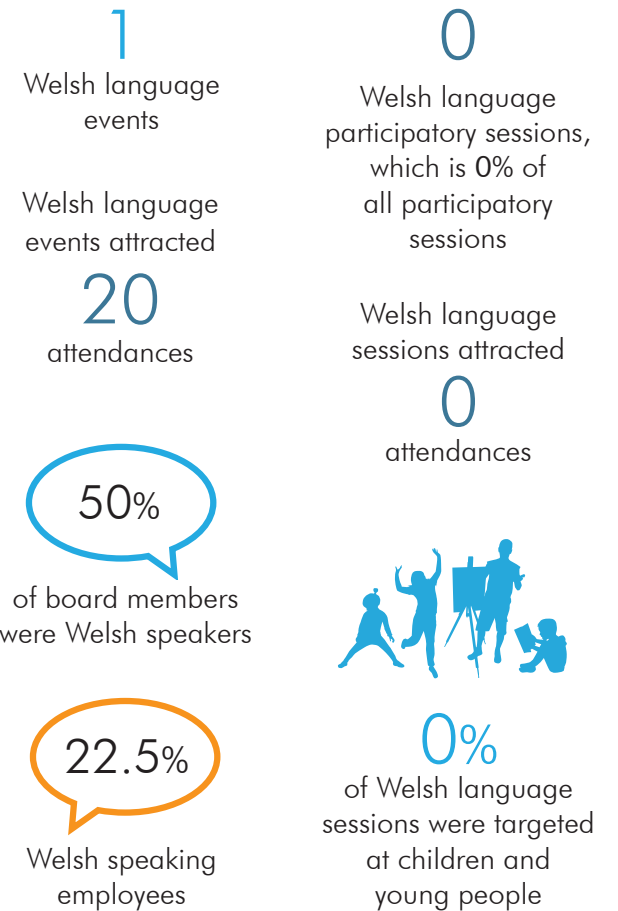
Participation



Employment and training

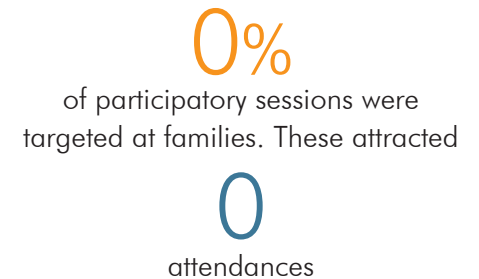


Welsh language*



*This data does not include bilingual activity

Families

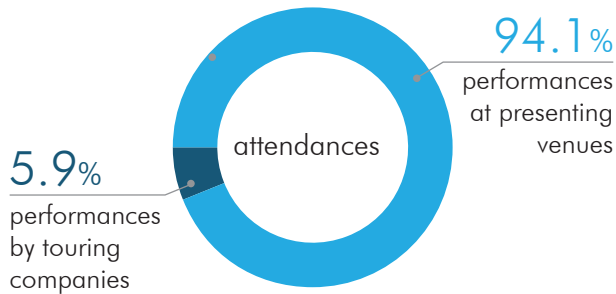


Wales Millennium Centre

Arts Portfolio Wales Survey 2017/18

Events

521 events | 406,663 attendances

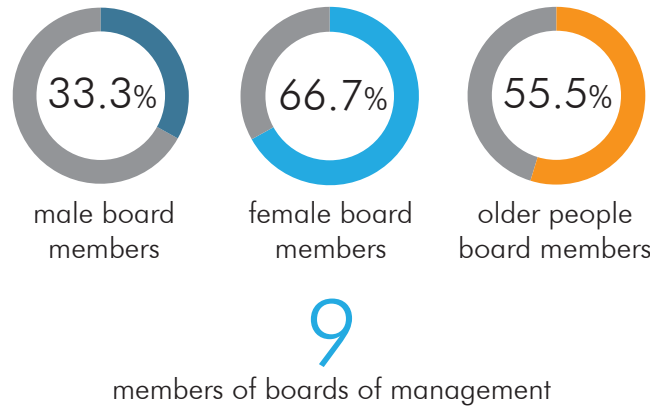
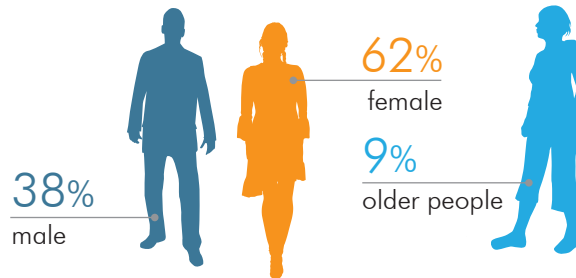
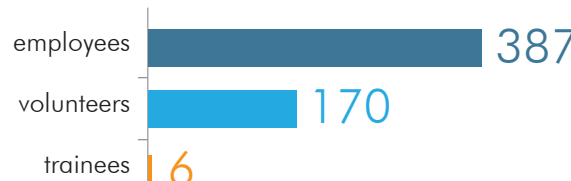
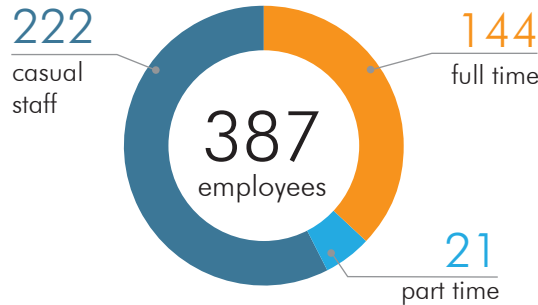


Participation

757 participatory sessions | 36,779 attendances

395 (52.2%) participatory sessions were specifically targeted at children and young people, compared to 47.8% of sessions that were organised for general participation

Employment and training



Welsh language*

6 Welsh language events

Welsh language events attracted 159 attendances

4 Welsh language participatory sessions, which is 0.5% of all participatory sessions

Welsh language sessions attracted 658 attendances

33.3% of board members were Welsh speakers



12.5% Welsh speaking employees

0% of Welsh language sessions were targeted at children and young people

*This data does not include bilingual activity

Families

70.6% of participatory sessions were targeted at families. These attracted 14,491 attendances

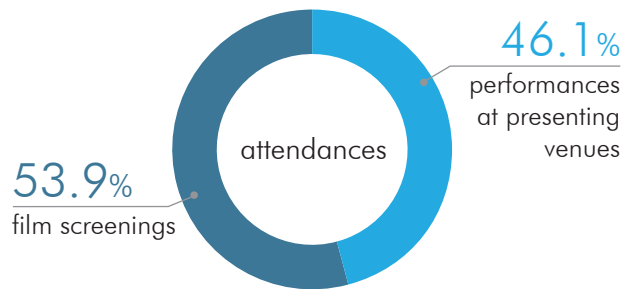
The Welfare Ystradgynlais

Arts Portfolio Wales Survey 2017/18

Events

367
events

10,998
attendances



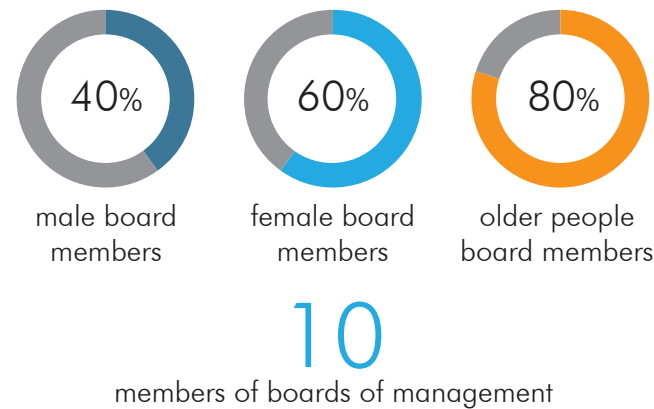
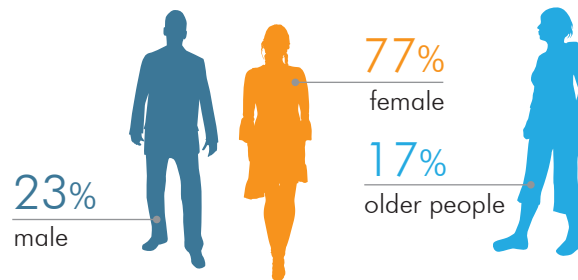
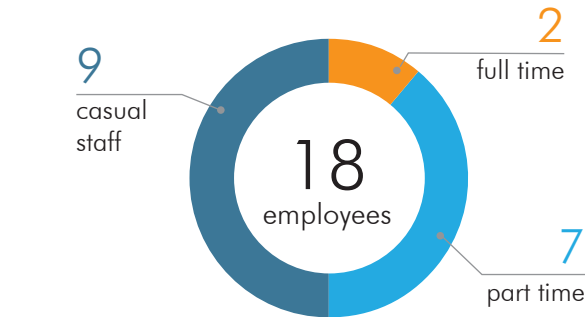
Participation

362
participatory
sessions

7,820
attendances

255
(70%) participatory
sessions were specifically
targeted at children and
young people, compared
to 30% of sessions that
were organised for
general participation

Employment and training



Welsh language*

1
Welsh language
events

Welsh language
events attracted
115
attendances

70%
of board members
were Welsh speakers

33%
Welsh speaking
employees

*This data does not include bilingual activity

9
Welsh language
participatory sessions,
which is 2.5% of
all participatory
sessions

Welsh language
sessions attracted
1,254
attendances



100%
of Welsh language
sessions were targeted
at children and
young people

Families

1%
of participatory sessions were
targeted at families. These attracted

81
attendances